

# TIXOBOND W-3

## Technical Data Sheet

### Material

**TIXOBOND W-3** is a ready-to-use detaching cement used to preserve substrates from deterioration. It can be used in direct contact to melted metal

For further information visit [www.deltaphoenix.it](http://www.deltaphoenix.it)

### General informations

<b>Main component:</b>	Aluminum Silicate
<b>Granulometry:</b>	0-0,1 mm
<b>Highest usage temperature:</b>	1150 °C
<b>Chemical analysis after heating at 150 °C:</b>	Al <sub>2</sub> O <sub>3</sub> +TiO <sub>2</sub> : 16-17 % MgO+CaO+K <sub>2</sub> O+ Na <sub>2</sub> O : 37-38 % SiO <sub>2</sub> : 42-43 % ZrO <sub>2</sub> : 5-6 %
<b>Density after setting:</b>	1400-1500 [kg/m <sup>3</sup> ]
<b>Application:</b>	by brush after pre-mixing
<b>Drying:</b>	90-150 °C

### Main technical characteristics

**TIXOBOND W-3** is a ready-to-use detaching cement used to preserve substrates from deterioration with the following main technical characteristics:

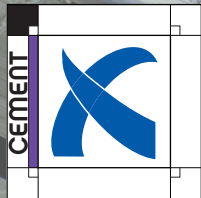
- create a protective layer between melted metal and refractory substrate
- it has high adhesion on pig iron and steel surfaces
- ready-to-use material
- fast drying process
- it can be applied by brush or spray
- it can be used on hot surfaces till 500-600 °C

### Fields of application

- Aluminum-proof and slug and corundum detaching cement for Aluminum
- Preserving cement for Aluminum furnaces
- Preserving cement for pig-iron connectors and for Aluminum transfer



**TIXOBOND W-3** is an official brand of Delta Phoenix srl  
Delta Phoenix srl Via XXV Aprile, 15, 25030 Maclodio (Brescia), ITALY. Phone +39 030 978241,  
Fax +39 030 9973964, [www.deltaphoenix.it](http://www.deltaphoenix.it), Mail: [info@deltaphoenix.it](mailto:info@deltaphoenix.it)



# TIXOBOND W-3

## Application

### Storage

**TIXOBOND W-3** package: 20 kg or 6 kg plastic barrels.

To preserve best conditions, it's necessary to store material in fresh, haired, dry warehouse, lifted from floor and far from walls.

Storage temperature: 5 °C - 30 °C

If all the information above are confirmed, storage time is 12 months

### Essential tools

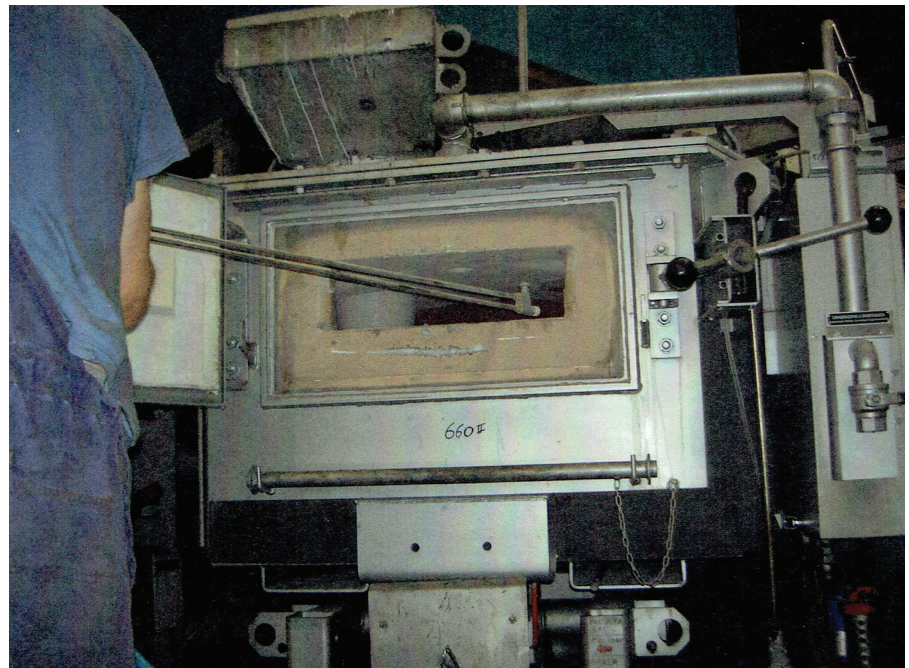
**TIXOBOND W-3** is a ready-to-use refractory cement which can be applied by brush(wearing protective gloves) or by spray

### Preparation of the support

Clean surfaces (bricks, concrete, carpentry,...)where material is needed. No dust, slug, metals and any other unstable element is allowed.

### Implementation and drying process

1. Apply **TIXOBOND W-3** by brush or by spray. It is possible to add 3-10% of water to reduce initial viscosity, but it is better to do not add any percentage of water.
2. It is possible to start drying process immediately after application. Material does not create any bubbles or cracks with thicknesses less than 1 mm



**TIXOBOND W-3** is an official brand of Delta Phoenix srl

Delta Phoenix srl Via XXV Aprile, 15, 25030 Maclodio (Brescia), ITALY. Phone +39 030 978241, Fax +39 030 9973964, [www.deltaphoenix.it](http://www.deltaphoenix.it), Mail: [info@deltaphoenix.it](mailto:info@deltaphoenix.it)